

AKASO

EK7000

A C T I O N C A M E R A



USER MANUAL

V53-V1.1

Content

Important Messages	02	>>
Notes on Using the Waterproof Housing	03	>>
1. What's in the Box	05	>>
2. Your EK7000	06	>>
3. Getting Started	09	>>
4. Overview of Modes	13	>>
5. Customizing Your EK7000	16	>>
6. Connecting to the AKASO GO App	21	>>
7. Playing Back Your Content	23	>>
8. Transferring Your Content	23	>>
9. Battery Maintenance	25	>>
10. Remote	27	>>
11. Mounting Your Camera	31	>>
12. Contact Us	34	>>

Important Messages

Congratulations on your new AKASO EK7000 Action Camera! You must be excited to use your new camera, but please spend some time familiarizing yourself with this manual first so that you get the most out of your camera's features and use it safely.

1. This camera is a precision instrument. Safeguard it from drops or impacts to prevent damage.
2. Ensure the camera operates within its recommended temperature range. Avoid leaving it at high or low temperatures for extended periods, as this can reduce its lifespan.
3. The camera is not waterproof. Therefore, before submerging it in water, it is essential to place it in the waterproof housing and ensure that all covers are securely closed and that the lens area is free of debris.
4. Avoid charging the camera for long periods of time. While charging, keep the camera away from kids and pets to prevent accidents.
5. Remove the battery from the camera if you don't plan to use it for an extended period.
6. Store the camera away from devices or objects with strong magnetic fields or power, like motors and magnets.
7. Store the camera away from sharp objects and moisture-prone areas.



Notes on Using the Waterproof Housing

This camera is not waterproof. Therefore, it's essential to place it in the included waterproof housing before using it in wet or underwater environments. The housing protects your camera from mud, dirt, debris, and, most importantly, water during your adventures. With the camera properly secured inside, you can safely dive up to 40 meters (132 feet) without concern.

Tip: The camera does not record sound when it's in the waterproof housing.

To maximize the potential of the waterproof case, follow these guidelines:

Before Use

1. Carefully inspect the housing for any signs of wear, cracks, or damage. Replace or repair it immediately if needed to ensure proper protection.
2. Check that all buttons on the housing function correctly and examine the rubber seal for any damage or deformities that could cause leaks.
3. Clean the camera's surface thoroughly to remove dust, dirt, or oil that could compromise the waterproof seal.
4. Once the camera is inside the housing, ensure no foreign objects are trapped around the rubber seal, and firmly close the backdoor to create a secure, watertight seal.

During Use

1. Avoid prolonged submersion to minimize potential stress on the housing and internal components.
2. Do not exceed the maximum depth rating, as excessive pressure could cause leaks or cracks, endangering your camera.

After Use

1. Rinse the housing thoroughly with fresh water after each use to remove salt,



chlorine, or debris, then dry it completely to prevent stains or residue buildup.

2. Submerge the housing in clean water for 5–10 minutes, gently shaking it to help dislodge any trapped residue.
3. Clean and dry both the interior and exterior with a soft cloth, then leave it in a well-ventilated area to air dry completely before storing it.

Warm tips:

1. Before using the housing, perform a waterproof test by submerging it in shallow water to check for leaks.
2. Do not use heat sources such as hair dryers to dry the housing, as excessive heat can compromise its waterproof integrity.
3. Avoid using the housing in hot springs, while bathing, or in extreme weather conditions, as exposure to high temperatures and corrosive elements can shorten its lifespan.
4. If there are sudden temperature or humidity changes, stop using the housing to prevent condensation inside, which could affect image quality.
5. Protect the housing from strong vibrations or impacts, as these may damage the seals and compromise waterproofing.
6. Never attempt to dismantle the housing, as this may impair its waterproof performance.

1. What's in the Box



AKASO EK7000
x 1



Waterproof
Housing x 1



Battery Charger
x 1



Battery
x 2



USB Cable
x 1



Remote Control
x 1



Remote Control
Strap x 1



Protective
Backdoor x 1



Clip
x 1



Clip 2
x 1



Buckle Mount
x 1



J-Hook Mount
x 1



E Mount
x 1



C Mount
x 1



D Mount
x 1



F Mount
x 1



A Mount
x 1



H Mount
x 1



Helmet Mount
x 2



Spanner
x 1



Bandage
x 4



Tether
x 5



Lens Cloth
x 1



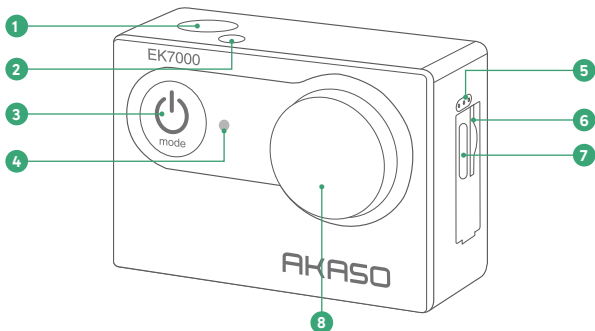
Double Sided
Adhesive Tape x 2



Quick Start
Guide x 1



2. Your EK7000



1 Shutter / OK Button

2 Working / Wifi Indicator

3 Power / Mode / Exit Button

4 Charging Indicator

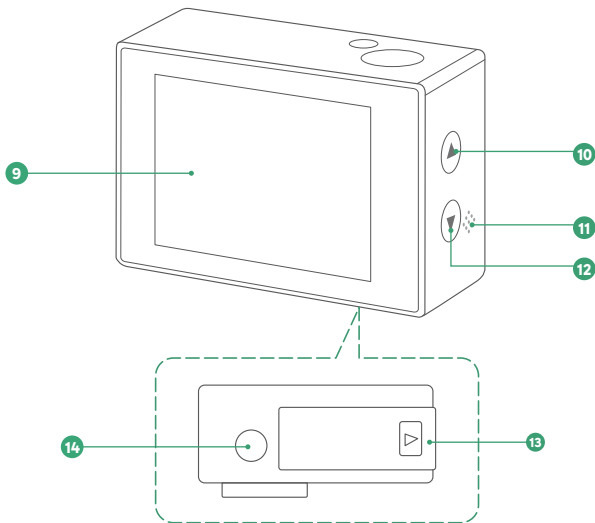
5 Microphone

6 Memory Card Slot

7 USB / External Mic Port

8 Lens





- 9 Display Screen
- 10 Up Button
- 11 Speaker
- 12 Down / Wifi Button
- 13 Battery Cover
- 14 1/4" Mounting Point



- 1 Shutter / OK Button
- 2 Up Button
- 3 Down/Wifi Button
- 4 Bolt
- 5 Power / Mode / Exit Button

Note: The camera does not record sound when it is in the waterproof case.

3. Getting Started

Welcome to your new EK7000. To capture video and photos, you will need a memory card (sold separately).

Using Memory Cards

Use brand name memory cards that meet these requirements:

- Class 10 or UHS-I rating
- Capacity up to 256GB (FAT32)

Note:

1. Format the memory card in the camera before using it to ensure compatibility.
2. Memory cards larger than the specified maximum capacity can cause issues like non-recognition or even camera malfunctions like unresponsiveness or firmware failure.
3. With FAT32, the card will stop recording and create a new file if the file size of a recording reaches 4GB.

Installing the Memory Card

First locate the memory card slot, then insert the memory card with the label facing the display screen. To remove the card, simply press it into the slot with your fingernail, and it will then pop out.

Note: Be sure to turn off the camera before installation.

Formatting the Memory Card

Before using, please format the memory card in the camera to ensure compatibility. Follow these steps to format your card:

Step 1: When on the preview screen, press the Mode button four times followed by the Shutter button to enter the camera's settings screen.



Step 2: Press the Down button to locate the “Format” option.

Step 3: Press the Shutter button to enter the formatting screen. The screen shows "Yes / No".

Step 4: Press the Shutter button again to select the "Yes" option and confirm formatting.

Step 5: Wait a few seconds, and your card is formatted successfully.

Installing the Battery

Slide down the buckle of the battery cover to open it, place the battery into the battery slot, then close the cover and push up to secure it. To remove the battery, pull the battery tab outward.

Charging the Camera

Before using the camera for the first time, please fully charge the camera. To do this, locate the USB power port, and connect the camera to a USB adapter or computer using the USB cable. The charging indicator remains red while charging and goes out when fully charged. Once charging is complete, disconnect the cable and ensure the charging cover is securely fastened.

Tip: You can also charge the battery on the battery charger before installing it onto the camera. The battery charger indicator turns red while charging and blue when fully charged.

Powering on or off

To power on: While the camera is off, press the Power button to turn it on. Once the display screen shows camera information and the working indicator turns blue, you'll know that your camera is powered on.

To power off: While the camera is on, press and hold the Power button for 3 seconds to turn it off. The working indicator will also turn off.

Powering on or off

To power on: While the camera is off, press the Power button to turn it on. Once the display screen shows camera information and the working indicator turns blue, you'll know that your camera is powered on.

To power off: While the camera is on, press and hold the Power button for 3 seconds to turn it off. The working indicator will also turn off.

Turning Wifi on or off

To turn on: On the preview screen, press the Down / Wifi button 2-3 seconds to turn on Wifi. The Wifi indicator will be flashing slowly.

Note: If the camera's Wifi is activated but not linked to the app within 3 minutes, it will auto-disable. Re-activate the camera's Wifi to reconnect to the app.

To turn off: On the Wifi screen, press the Down / Wifi button to turn off Wifi.

Switching Modes

To switch mode: On the preview screen, press the Mode button to switch modes among Video, Photo, Burst, Time Lapse Photo, Settings, and Playback.

To exit mode: Press the Mode button to exit the current mode.

Tip: To return to the preview screen from Settings mode, press the Mode button twice.

Zooming in or out

On the preview screen, press the Up or Down button to zoom in or out. Each press will incrementally zoom in or out by 0.5x. The EK7000 action camera supports up to 4x zoom.

Using the Shutter Button

In Photo or Video mode, press the Shutter button to capture photos or start video recording. To stop recording in Video mode, press the Shutter button again.

Tip: The working indicator flashes blue slowly during video recording and flashes quickly during photo capture.

Entering the Settings Screen

On the preview screen, press the Mode button repeatedly until the Settings icon appears, then press the Shutter button to enter Settings mode. From there, you can configure the video, photo, and system settings.

Entering the Playback Screen

On the preview screen, press the Mode button five times to switch to Playback mode. From there, you can choose either video or photo files for playback.

4. Overview of Modes

The camera boasts 6 modes: Video, Photo, Burst Photo, Time Lapse, Settings, and Playback. On the preview screen, press the *Mode* button to switch modes.

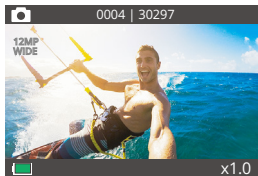
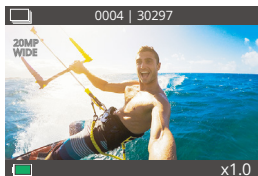


Photo Mode

On the preview screen, press the *Mode* button once to switch to Photo Mode.

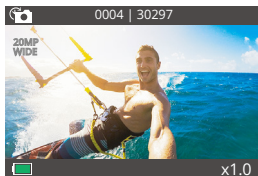
In this mode, press the *Shutter* button to take a photo at the preset photo resolution.



Burst Mode

On the preview screen, press the *Mode* button twice to switch to Burst Mode.

In this mode, press the *Shutter* button to take 3 photos per second.

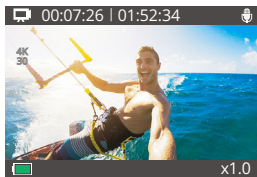


Time Lapse Photo Mode

On the preview screen, press the *Mode* button three times to switch to Time Lapse Photo Mode.

In this mode, when you press the *Shutter* button, the camera automatically starts the preset countdown to take a photo and repeats this process continuously until you press the *Shutter* button again.

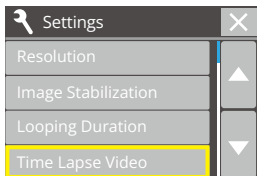




Video Mode

The camera is in Video mode by default when turned on.

In this mode, press the Shutter button to record normal video at the preset resolution and frame rate. Press the Shutter button again to stop recording.

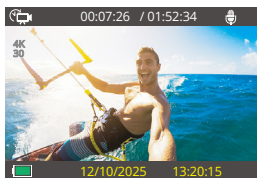
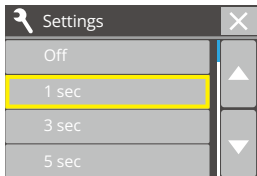


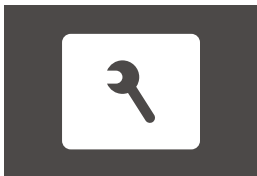
Time Lapse Video Mode

On the preview screen, go to the settings menu, find "Time Lapse Video", and select your preferred capture interval to enable it. Press the Shutter button to confirm, then press the Mode button twice to return to the preview screen. The camera will now enter Time Lapse Video mode.

In this mode, press the Shutter button to create video clips by capturing frames at the set interval.

Tip: To return to standard Video mode, go to Settings > Time Lapse Video and select "Off."

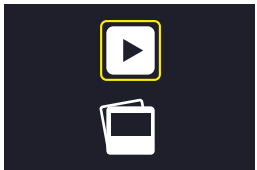
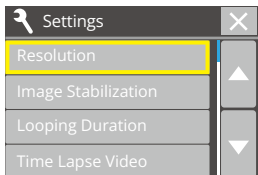




Settings Mode

On the preview screen, press the Mode button repeatedly until the Settings icon appears, then press the Shutter button to enter Settings mode.

In this mode, press the Up or Down button to scroll through the options, then press the Shutter button to confirm the selected option.



Playback Mode

On the preview screen, press the Mode button five times to switch to Playback mode.

In this mode, use the Up/Down buttons to select video or photo files. Press the Shutter button to play a video, or use the Up/Down buttons to browse photos.

5. Customizing Your EK7000

Video & Photo Settings

1. Resolution

4K30fps / 2.7K30fps / 1080P60fps / 1080P30fps / 720P120fps / 720P60fps (Default setting is 4K30fps)

Configure the resolution settings before recording videos. The camera records up to 4K 30fps videos.

Note: Capturing high-resolution or high-fps videos in warm environments can cause the camera to heat up and consume more power.

2. Image Stabilization

Off / On (Default setting: Off)

Image Stabilization can efficiently smooth out the lens shakes, resulting in smooth and pristine videos. This feature is ideal for capturing scenes involving activities like riding, skating, and handheld use.

Note: This setting and Time Lapse Video cannot be used at the same time. Be sure to disable this setting before configuring Time Lapse Video.

3. Looping Duration

Off / 1 min / 3 min / 5 min (Default setting: Off)

With Looping Duration set, the camera continuously records video in segments of the selected length. When the memory is full, new video files will overwrite the old ones to ensure continuous recording.

Note: You cannot configure Time Lapse Video when this setting is enabled.

4. Time Lapse Video

Off / 1 sec / 3 sec / 5 sec / 10 sec / 20 sec / 30 sec / 60 sec (Default setting: Off)

Enable Time Lapse Video mode by setting the interval at which the camera captures a scene. The camera will capture scenes at the predefined interval and seamlessly



compile them into a short video clip.

5. Photo Resolution

20MP / 16MP / 12MP / 5MP (Default setting: 20MP)

Set the photo resolution before capturing photos. This camera is capable of capturing up to 20MP photos.

6. Interval

2 sec / 3 sec / 5 sec / 10 sec / 20 sec / 30 sec / 60 sec (Default setting: 5 sec)

Set the interval at which the camera captures a photo in Time Lapse Photo mode. For instance, if you select the "3 sec" option, then press the Shutter button, the camera will count down 3 seconds and take a photo, then repeat this process continuously. To stop capturing, press the Shutter button again.

7. Time Lapse Photo

Off/ On (Default setting: Off)

With this setting enabled, the camera captures a photo at the preset interval and repeats this process until you press the Shutter button again. When disabled, the camera takes only one photo.

8. Burst

3 Photos

In Burst mode, the camera captures 3 photos in 1 second, so it is perfect for capturing fast-moving activities.

System Settings

1. Microphone

Built-in / External (Default setting: Built-in)

Select either a built-in microphone or an external one. To use an external microphone for better sound quality, select "External" first. Then, connect a compatible external microphone to the camera's USB port.

Tip: This setting is only available in Video Mode; if you do not wish to use an external microphone, be sure to select "Built-in" in case the camera does not properly record sound during video recording.

2. Special Effect

Normal / B & W (Black & White) / Retro / Negative / Warm / Cool / Red / Green / Blue (Default setting: Normal)

Choose an ideal special effect for your photos or videos to enhance their appeal.

3. EV

-2.0 / -1.7 / -1.3 / -1.0 / -0.7 / -0.3 / 0.0 / +0.3 / +0.7 / +1.0 / +1.3 / +1.7 / +2.0 (Default setting: 0.0)

EV (Exposure Value) lets you adjust the brightness of your photos and videos. A higher EV value creates a brighter image, while a lower value results in a darker image.

4. Upside Down

Off/On (Default setting: Off)

This setting determines the orientation of your videos or photos to prevent upside down footage.

Note: The user interface will be upside-down when Upside Down is enabled.

5. Anti-Flicker

50Hz / 60Hz / Auto (Default setting: 60Hz)

Select the frequency at which the video is recorded or played back on the TV according to your region. If you live in the northeastern area, please set the power frequency to 60Hz. If you live outside this area, set it to 50Hz. Be sure to select the correct format to avoid the light waves while capturing indoors.

6. Screen Saver

Off / 1 min / 3 min / 5 min (Default setting: 1 min)

Determine when the camera's display should go dormant to conserve battery. If you need the screen back on, just press any button.

7. Auto Power Off

Off / 1 min / 3 min / 5 min (Default setting: 3 min)

Set the duration of inactivity after which the camera automatically powers off. If not operated within the chosen duration, the camera will shut down.

8. Date Stamp

Off / Date / Date & Time (Default setting: On)

With this feature enabled, the camera will add a time watermark to your videos or photos per your settings.

9. Sounds

Shutter: On / Off (Default setting: On)

Start-up: On / Off (Default setting: On)

Beep: On / Off (Default setting: On)

Volume: 0 / 1 / 2 / 3 (Default setting: 2)

Turn Shutter, Start-up and Beep sound on or off or adjust the camera's volume.

10. Language

English / 简体中文 / 繁體中文 / Italiano / Español / Português / Deutsch / Dutch / Français / Čestina / Polski / Türk / Русский / Română / 日本語 / 한국어 / Indonesia (Default setting: English)

Set the system language that appears on the camera.

11. Date & Time

MM/DD/YY HH:MM

Manually set your camera's date and time. Tip: The camera's date and time will sync with your phone when it's connected to the AKASO GO App.

Note: If you replace the battery, the date and time will reset to the default values.

12. Format

No / Yes (Default setting: No)

Regularly reformat your memory card for optimal performance. Formatting will delete all the media files stored in the memory card. Ensure important files are saved elsewhere before proceeding.

13. Reset

No / Yes (Default setting: No)

This option resets all settings to their default values.

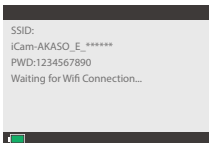
14. About

You can check the model and the updated time of your EK7000.

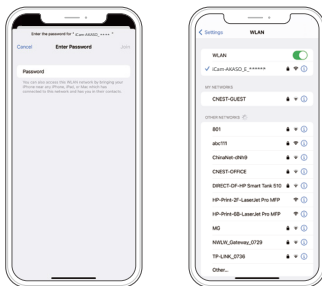
6. Connecting to the AKASO GO App

To connect your camera to the AKASO GO App, please download this app from the App Store or Google Play to your smartphone first. When your camera is connected to the AKASO GO app, you can control it to capture, or change its settings using your phone. You can also live preview, playback, download, edit, and share videos via this app. Follow the instructions below to connect your camera to the AKASO GO App.

1. Turn on the camera, press and hold the Down /Wifi button to turn on the camera's Wifi. The camera will enter Wifi mode and display the Wifi information in 3 seconds.



2. Enter your phone's Wifi settings page, find the Wifi named "iCam- AKASO_E_*****" in the list and tap on it, then enter the password 1234567890 for connection.

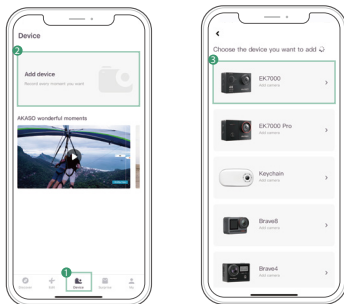


Tip:

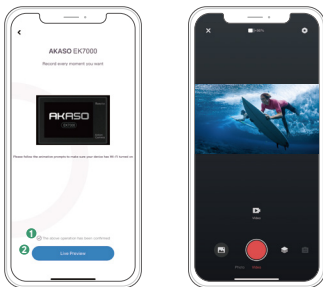
While connecting the camera's Wifi, a "No Internet Connection" or "Weak Security" notification will appear since the phone's data is paused. However, you can proceed with the connection.



3. Open the AKASO GO App on your smartphone, then tap "Device" → "Add Device" to choose EK7000 from the options for connection.



4. Tick "The above operation has been confirmed", and tap "Live Preview". Your camera will be connected to the AKASO GO app in seconds.



Tips:

- ① For a successful connection, first allow the app to access your Location and Local Network.
- ② If you failed to connect the camera's Wifi, please make sure you successfully turned on the camera's Wifi and stay close to the camera.

7. Playing Back Your Content

You can play back your content on the camera, your computer, TV, smartphone or tablet. You can also play back content by inserting the memory card directly into a device, such as a computer or a compatible TV. With this method, playback resolution depends on the resolution of the device and its ability to play back that resolution.

Viewing Videos or Photos on Your EK7000

1. On the preview screen, press the *Mode* button several times to enter the playback screen.
Note: If your memory card contains a lot of content, it might take a minute for it to load.
2. Enter the Video or Photo set, press the Up or Down button to scroll through the video or photo files, and locate the file you want to view.
3. Press the Shutter button to open the video or photo file in full-screen view. And it will play.
4. To return to the thumbnails screen, press the *Mode* button.
5. To exit the album, press the *Mode* button.

Deleting Videos or Photos on Your EK7000

1. On the preview screen, press the *Mode* button several times to enter the playback screen. Note: If your memory card contains a lot of content, it might take a minute for it to load.
2. Enter the Video or Photo set, press the Up or Down button to scroll through the video or photo files.
3. Press the Shutter button to open the video or photo file you want to delete in full-screen view.
4. Press and hold the Shutter button for 3 seconds, the screen shows “Delete this file? No/Yes”.
5. Press the Up button followed by the Shutter button, and the selected file will be deleted.



8. Transferring Your Content

Transferring Your Content to a Computer

You can transfer your content to a computer via a USB cable or a card reader (sold separately). To transfer files to your computer via a USB cable, connect your camera to the computer's USB port using the USB cable. When prompted, select "USB Storage" as your connection preference. To transfer files to the computer using a card reader, insert a memory card into the card reader, then connect the reader to your computer's USB port. After successful transmission, you can transfer the files to your computer or delete selected files using File Explorer.

Downloading Your Content to a Smartphone

1. Open the AKASO GO App, then connect it to the camera.
2. Tap the Album icon in the bottom left corner to view all the photos and videos captured by the camera.
3. Tap the Select icon located in the upper right corner. Once you have selected your desired file, tap on the Download icon in the bottom right corner and confirm the download. The file will be saved to your phone's gallery once the download completes.

Note:

1. To access files captured by the camera, first allow the app to access your phone's album in Settings → AKASO GO → Photos → All Photos.
2. Please do not alter Wifi settings or disconnect from the app during the download progress.



9. Battery Maintenance

1. Maximizing Battery Life

- (1) Before using the EK7000 action camera for the first time, charge the battery fully and secure it in its slot.
- (2) Use the Screen Saver setting or capture at lower resolutions and frame rates.
- (3) Charge the battery fully before storage.
- (4) To ensure optimal performance, replace the battery annually.

2. Notes

- (1) To prevent potential damage, use only AKASO charging cables and batteries.
- (2) Capturing at higher resolutions or frame rates, especially in warmer conditions may cause the camera to consume more and heat up.
- (3) The AKASO GO app might generate extra heat and drain power faster in areas with unstable network connectivity.
- (4) If the camera overheats, let it cool down before using it again. Additionally, record videos at lower resolutions and frame rates or try to use features that consume less power.

3. Battery Storage and Handling

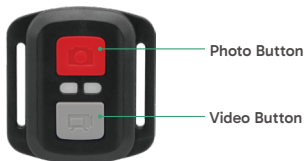
- (1) If storing for extended periods, maintain a battery charge of 50-60%. Charge every 3 months and discharge the battery every 6 months.
- (2) Do not store the battery with metal objects such as coins, keys, or necklaces. If the battery terminals come close to metal objects, a short circuit may cause fire.
- (3) Store in dry areas, safe from potential physical damage caused by squeezing or collision.
- (4) Avoid using or storing the battery at high temperatures, such as in direct sunlight or a hot compartment. The battery will heat up, malfunction, or have its service life shortened in these conditions.
- (5) Avoid using or storing the battery in low-temperature environments, as this will shorten the battery life or cause it to malfunction.



- (6) Avoid environments with strong static or magnetic fields; these can compromise the battery's protective unit, posing safety risks.
- (7) If the battery emits an odor, overheats, changes color, gets distorted, or exhibits any anomalies, discontinue use and remove it immediately from the camera or the battery charger whether it is being used, charged, or stored.
- (8) Safely insulate used electrodes to prevent potential hazards.
- (9) Never discard batteries in fire to prevent the risk of explosion.

10. Remote

When the camera is turned on, it will be automatically connected to the remote within 10 meters of distance. You can control the camera to take photos or record videos using the remote.



Note: The remote is splashproof only.

Video

To record video, first make sure the camera is in Video mode, then press the Video button. The camera's working indicator will be flashing during video recording. To stop recording, press the Video button again.

Photo

To capture a photo, first make sure the camera is in Photo mode, then press the Photo button. The camera will emit a shutter sound indicating the completion of the shot.

Burst Photo

To capture burst photos, first verify the camera is in Burst mode, then press the Photo button. The camera will emit a shutter sound indicating the completion of the shot.

Time Lapse

To capture time lapse photos or videos, first verify the camera is in Time Lapse mode, then press the Photo or Video button. The camera will emit a shutter sound indicating the completion of the shot.



Replacing the CR2032 battery of the remote

1. Use a screwdriver to remove the 4 screws on the back cover of the remote, allowing you to open it.



2. Remove another 4 screws on the remote's circuit board.



3. Lift the circuit board and slide out the battery, as shown below.

Note: Avoid rotating the circuit board to prevent reversing the remote control buttons.



4. Install the new battery, keeping the “+” pole facing up.
5. Install all 4 screws back onto the circuit board.



6. Install all 4 screws back into the cover.

⚠ WARNING

- **INGESTION HAZARD:** This product contains a button cell or coin battery.
- **DEATH** or serious injury can occur if ingested.
- A swallowed button cell or coin battery can cause **Internal Chemical Burns** in as little as **2 hours**.
- **KEEP** new and used batteries **OUT OF REACH** of **CHILDREN**
- **Seek immediate medical attention** if a battery is suspected to be swallowed or inserted inside any part of the body.



- a) Remove and immediately recycle or dispose of used batteries according to local regulations and keep away from children. Do NOT dispose of batteries in household trash or incinerate.
- b) Even used batteries may cause severe injury or death.
- c) Call a local poison control center for treatment information.
- d) CR2032
- e) DC 3V
- f) Non-rechargeable batteries are not to be recharged.
- g) Do not force discharge, recharge, disassemble, heat above (manufacturer's specified temperature rating 60°C) or incinerate. Doing so may result in injury due to venting, leakage or explosion resulting in chemical burns.
- h) Ensure the batteries are installed correctly according to polarity (+ and -).

Do not mix old and new batteries, different brands or types of batteries, such as alkaline, carbon-zinc, or rechargeable batteries.

Remove and immediately recycle or dispose of batteries from equipment not used for an extended period of time according to local regulations.

Always completely secure the battery compartment. If the battery compartment does not close securely, stop using the product, remove the batteries, and keep them away from children.

11. Mounting Your Camera

Enhance your user experience by mounting the camera to various gear like helmets and more. Here's a quick guide.





=



+



=



+



+



=



+



+



=



+



+

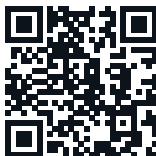


WATCH HOW TO VIDEOS

Get Extra
1-YEAR WARRANTY

Visit our website

www.akasotech.com/qsg



Watch the video to learn how to use and understand all the accessories of your AKASO action camera.

12. Contact Us

 (888) 466-9222 (US)

 cs@akasotech.com

 www.akasotech.com

For any inquiries with AKASO products, please feel free to contact us, we will respond within 24 hours.

