

USER MANUAL

DK100 Video Doorbell

AKASO®

CONTENTS

Setup Guide	1
Firmware Upgrade	5
App Menu Introduction	5
Homepage Introduction	6
Monitoring Function Introduction	6
Device Setting Introduction	14
Tosee Plus	19
Warm Tips	20
Troubleshootings	20
Contact US	20

SETUP GUIDE

1. Install Phone APP

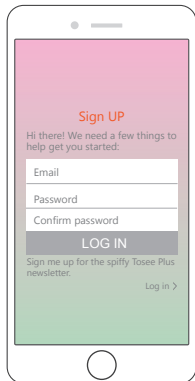
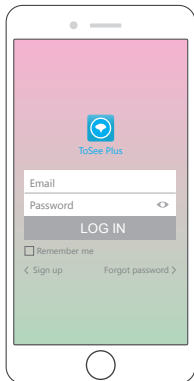
Please download and install "Tosee Plus" APP on your phone by scanning the below QR code or searching in the app store.



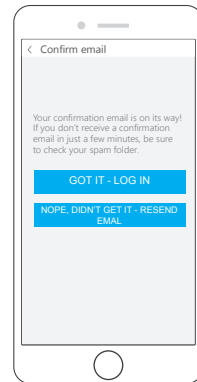
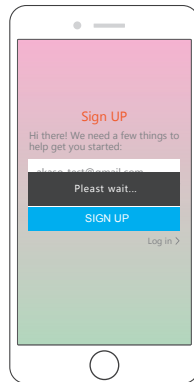
2. Get a New Account

If you already have an account of "Tosee Plus", just ignore the below and log in your account to add device, please refer to 3.

- ① Open "Tosee Plus" Phone APP to click "Sign up", then input the email address and password, click "SIGN UP".

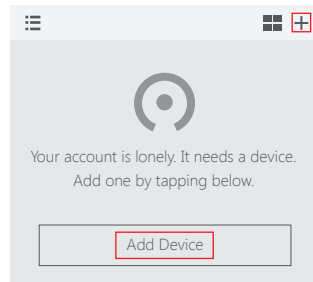


- ② Only wait for seconds, a confirm email will send to your mailbox, just check whether you get the email. If yes, please click "GOT IT-LOG IN", you get a new account of "Tosee Plus".

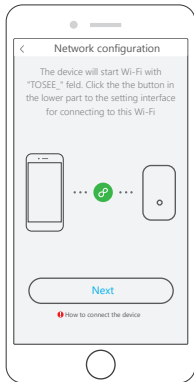
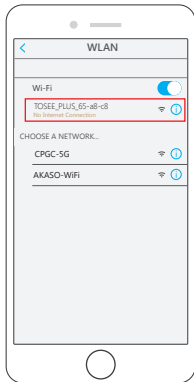
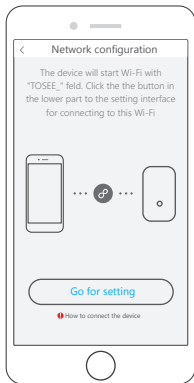
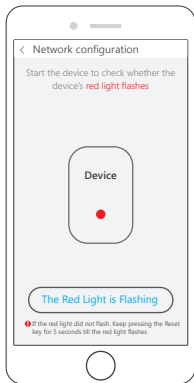


3. Add Device

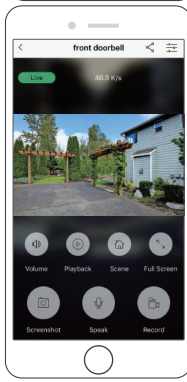
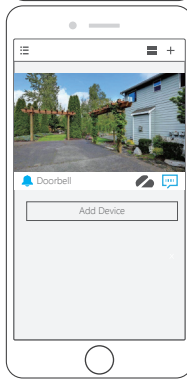
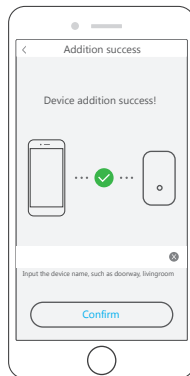
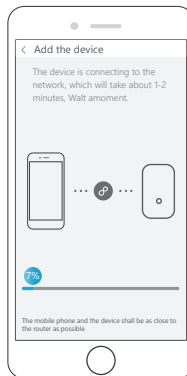
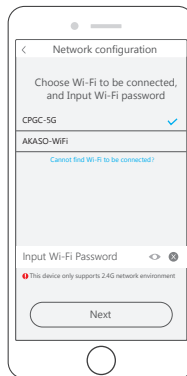
- ① Open "Tosee Plus" APP and log in your account to enter into the main interface. Click "Add Device" or "+" icon on the top right corner.



- ② Then follow the instruction to click "The red light is flashing → Go for setting" to select the WiFi of the device (TOSEE_PLUS_65-a8-c8), click "<" to back the Phone APP; click "Next"



- ③ Select your Wi-Fi name and input your password, click "Next" to connect your router with the device, waiting for seconds you will see "Device addition success", then click "Confirm" to the main interface. Click 📺 icon to live view, see following:



Note: If you want to reconfigure your Wi-Fi network, please press reset button for 5 seconds and follow the instructions again.

FIRMWARE UPGRADE

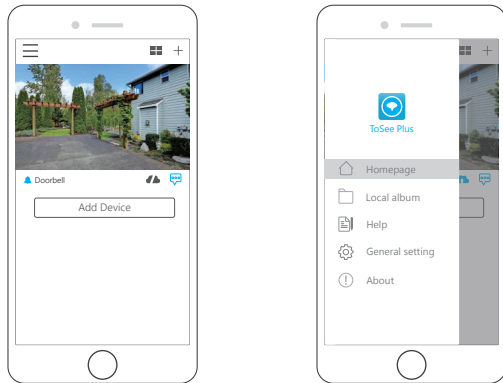
Automatically checking firmware version every time the device turns on, when latest version detected, the upgrade bulletin will pop up!

Click "Upgrade" as you need (when the standby power is low, the upgrade bulletin cannot pop up). Upgrading process will take a few minutes.

Note: The device power supply cannot be turned off during upgrade process, turn-off power may damage the device.

APP MENU INTRODUCTION

Click the top left logo ☰ to enter Tosee Plus menu page.



1. Homepage: Device Management
2. Local Album: Photo and local video management
3. Help: APP using help
4. General settings: APP account settings
5. About: APP version number and user agreement

HOMEPAGE INTRODUCTION



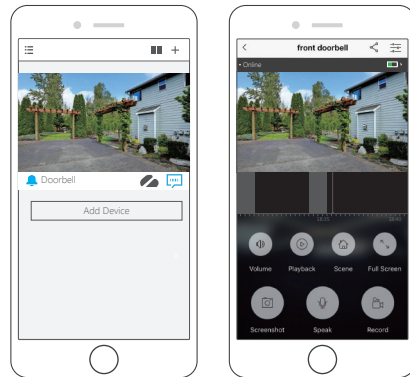
On menu page, click Homepage icon 🏠 to enter Home page.
















In this page, you can manage devices, including add device, delete the device and directly enter device to view live video.

Each image represents a device, click the image can connect to the corresponding device. Image shows the last scene of exiting from the device (If the device has never been connected, the image is default picture). Shortcut buttons of cloud storage services and alert information display on right bottom.

MONITORING FUNCTION INTRODUCTION

Monitoring page:
On Home page, tap on device image to enter live monitor page:






- **Connection status:** "Connecting", "Online" and "Connection failed" display on the top left corner.
- **Battery capacity:** "low power state" , "charging state" , "full charged"  (icons  and  display when device is in charging)
(When the battery capacity is sufficient or the device is powered by USB, there is no icon on the top right)
- **Timebar:**  Under the video interface, move left and right to select time and playback video.
- **Mute**  : Turn on/ off the sound of the video.
- **Message**  : View the device's alert information and cloud storage recordings.
- **Save**  : View user-edited videos.
- **Landscape**  : Play the surveillance video in full screen.
- **Screenshot**  : Take a screenshot of the current video.
- **Dialog**  : Turn on / off the intercom function.
- **Video recording**  : Record surveillance video on local device, the video can be viewed in the file.
- **Private share**  : Enter sharing page to share the video to your family, friends or other people.
- **Device setting**  : Enter the device setting page to manage and configure devices.

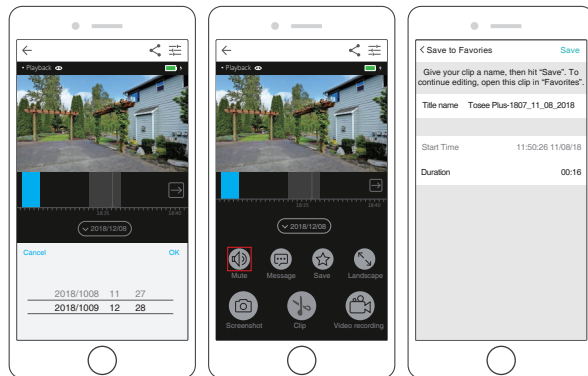
1. Playback Video

On monitoring page, selecting a precise date and time to locate recordings for reviewing, dragging the timebar to view on-demand video, the color-marked parts of timerbar indicate videos saved during the time, the black parts indicate no videos recorded.

You can select certain recording time in a more precise way by zoom in/out the timebar with two fingers .

Note:

- ① Click , you can return to live video directly from Cloud-storage video.
- ② You can click Clip icon  to edit video (Title Name, Duration), click "Save" to save edited videos (only Cloud-storage video support edit).
 - Title Name: (Can be modified)
 - Duration: (You can edit the duration, the default is original video duration)
- ③ You can view the edited video in Save .




2. **Mute**  : Turn on / off the sound of surveillance video.


3. **Message**  : View the device's alert information and cloud storage recordings.

On monitoring page, click Message icon to enter message page.

The videos are divided according to time order and video types (Types: All, Visitor, Detect, Live).

Icons description:

 **User wake-up video:** user opens mobile app and wakes up device.
Device records video during connection with the device.
The timebar of video is black.

 **Visitors wake up the video without answer:** video doorbell wakes up when someone presses the doorbell button, if there is no answer, device records visitor video and store into Cloud service.

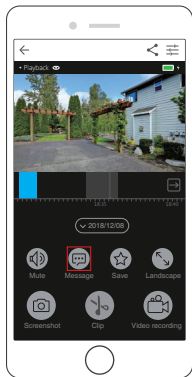
The recording timeline is red.

🔒 Visitors wake up the video with answer: video doorbell waked up when someone presses the doorbell button, if get answer, device records visitor video and store into Cloud service.

The timebar of video is blue.

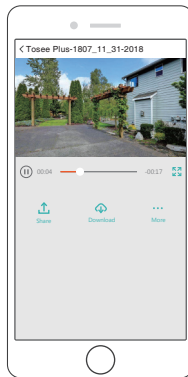
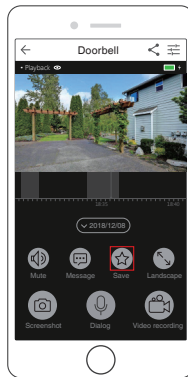
🏠 Motion detection recording: video doorbell wakes up and records when detects movement in front of the device, the video is stored into Cloud service.

The timebar of video is yellow.



4. Save 📌 : View videos edited by users.

On monitoring page, click Save icon 📌 to view saved videos.



Tap on saved video image to view the video.


Icons description:

- 📌 Share the video to your family, friends or other people.
- 📄 Download the video to local file.
- ⋮ Rename or delete the video.
- ⏏ Full screen mode.
- ⏸ Play / Pause the video.

Zoom function

On live monitoring page and playback video page, you can magnify videos with two-finger zoom gesture, to get a more details of the video.


5. Landscape: Play the surveillance video in full screen.

On monitoring page, click on  or place the mobile phone horizontally to get full screen image.


Click  return to vertical screen mode.



6. Screenshot: Take a screenshot of the current video.

On monitoring page, click Screenshot  to get a screenshot of the current video, you can view the screenshot image in local file.

7. Dialog: Turn on / off the intercom function.


On monitoring page, click  to turn on/ off the intercom function.

 indicates intercom is open.

 indicates intercom is close.


You can adjust the volume in the device setting page.

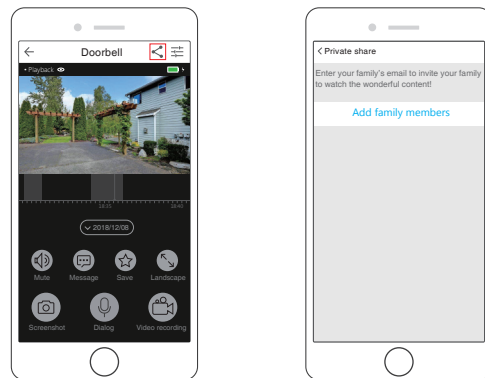
8. Video recording: Record surveillance video on local device, the video can be viewed in the file.

On monitoring page, click  to record monitoring video on mobile phone, view the recordings in the local file.

 indicates recording is on.

9. Private share: Enter sharing page to share the video to your family, friends or other people.

On monitoring page, click  to enter the sharing page, click "Add family members" and enter family's email to invite, the sharer will receive mail when the sharing is successful.



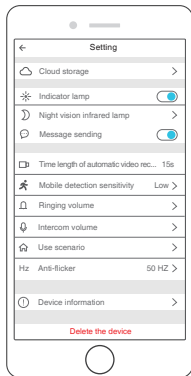
Deleting shared users

Select the user you want to delete and left slide, click delete button on the top right to delete shared user.

DEVICE SETTING INTRODUCTION

Device setting: manage and setup devices.

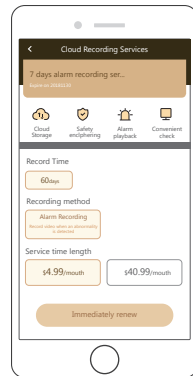
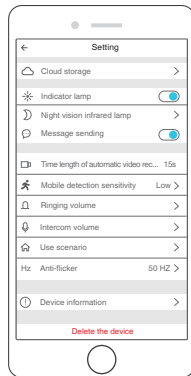
On monitoring page, click  to enter Device setting page.



- **Cloud storage:** Viewing and purchasing cloud storage.
- **Indicator light:** Turn on / off indicator light.
- **Night Vision Infrared Lamp:** Set night vision light function.
- **Message Push:** Turn on / off APP push message function.
- **Time length of automatic video recording:** 15s (Default recording time length).
- **Mobile Detection Sensitivity:** Adjust the sensitivity of the device motion detection.
- **Ringing volume:** Adjust the ringing volume of the device.
- **Intercom volume:** Adjust the device intercom volume.
- **Usage scenario:** Select the device video scene mode.
- **Anti-flicker:** Adjust flicker frequency
- **Device Information:** Includes the following information: View device information and serial number, the unique information about the device.

1. Cloud storage service

On the setting interface, tap on "Cloud storage" to enter Cloud Recording Service.



Cloud Recording Service supports real time recording and encrypted uploaded videos to the Cloud for saving. You can log in to the APP to view the historical video and get instantly alert notifications on APP when motion detected.

Cloud storage service advantages:

- ① Security & anti-theft, cloud storage can avoid video loss, achieve real security and anti-theft.
- ② Unlimited storage space, unlimited storage within recording days, seamless recording.
- ③ Data encryption, bank-level data security, 100% encryption protection from transmission to storage process;
- ④ Conveniently view, log in APP on mobile phone, PC to view videos anytime and anywhere.

Free trial cloud storage service (30-day)

After setup the device APP and activating device, the APP will prompt the user to try a free trial for Cloud service.

Note: When the App prompts you to try the free trial, please don't click "give up the free trial", otherwise you will lose chance for free use of the Cloud package.

2. Indicator light / Message sending

On the setting interface, toggle the switch  to turn on / off the settings:

① **Indicator light:** Turn on the switch, the light around the doorbell button will light as the device wakes up. Switch off, the light lights up only when the device is powered up or someone presses the button or in abnormal network situation.

① **Push message:** Open the switch to receive the push message of the device. If close, APP cannot receive the push message from the device.

3. Night vision infrared light

On setting interface, select "Night vision infrared lamp" to enter Night vision infrared light setting.

Night vision settings:

On: The device keeps the light sensor on.

Off: The device cannot trigger the light sensor.

Auto: The device can automatically turn on / off the trigger night vision.

When device in dark condition, IR-cut lens IR filter open, infrared light is on, video surveillance image is black and white, when in bright environment, IR-cut lens IR filter close, infrared light is off, surveillance video is RGB image.

4. Motion Detection Sensitivity Configuration

On setting interface select "Motion detection sensitivity". Enter the setting,

Turn on /off and select sensitivity level

Off: Not trigger PIR.

Low: Trigger in 10 seconds when someone /something enter PIR detection range, the device wakes up by motion detection, sends push message to APP and record a surveillance video of current scene.

Medium: Trigger in 5 seconds when someone /something enter PIR detection range, the device wakes up by motion detection, sends push message to APP and record a surveillance video of current scene.

High: Trigger immediately as someone / something entering PIR detection range. The device wakes up by motion detection, sends push message to APP and record a surveillance video of current scene.

5. Ringing Volume

On setting interface select "Ringing volume". Enter the setting. Turn Off / On the ringer volume.

On: Doorbell ringing when someone press the button.

Off: The doorbell will not ring when someone press the button.

6. Intercom Volume

On setting interface select "Intercom volume". Enter the setting, move the slider to select volume value.

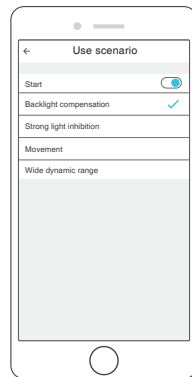
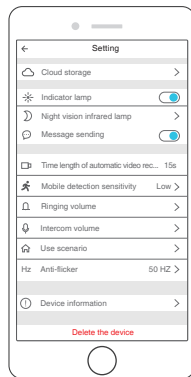
Intercom volume value: 0-10, default value is 6.

The bigger the value set, the louder the intercom sounds

Set volume value at 0: The device does not transmit user voice.

7. Use scenarios

On setting interface select "Use scenario".



Use scenario:

Off (without scenario): Original video image with default setting.

Backlight Compensation: Suitable for condition with weak light, lighting the dark areas to get clearer images.

Strong Light Inhibition: Suitable for environment with strong light, effectively reduce the large halo and blurred video image caused by strong light exposure, get clearer images.

Movement: Suitable for observing fast-moving objects, catching clear moving detail images.

Wide Dynamic Range: Suitable for environments with large light differences.

Through the processing of the image, lighting the dark area and reduce strong light area, coordinating image color.

8. Anti-Flicker

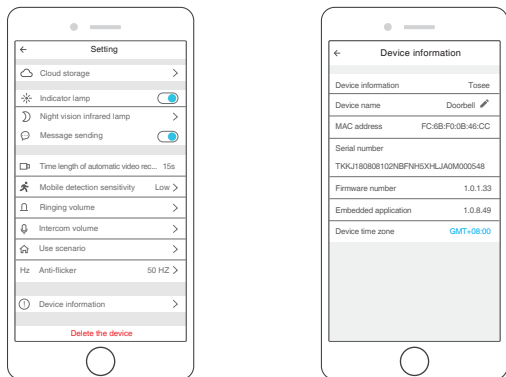
On setting interface select "Anti-flicker".

Function description: The scanning frequency of interlaced scanning and progressive scanning is different between the displayer and TV, there may be flickering when shooting with camera, Anti-flicker function can help to avoid flickering.

There is no flickering when the scanning frequency of camera and displayer is the same or in multiple cycle.

9. Device information


On setting interface select "Device information".

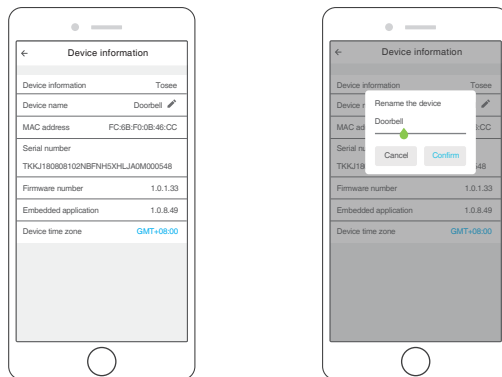


Device Information:

- ① **Device Information:** View the device name.
- ② **Device Name:** View and modify the device nickname
- ③ **MAC Address:** MAC address of the device
- ④ **Serial Number:** Unique identifier of the device
- ⑤ **Firmware No.:** Device upgrade and view device firmware version information.
- ⑥ **Embedded Application:** Server version information corresponding to the device
- ⑦ **Device Time Zone:** Configure the device time zone function. (functions available in overseas editions).

Device rename

On Device information interface, click icon  to edit, input device name and click "Confirm" to modify the device name.



Device time zone modification

On Device information interface, click "Device time zone" to select time zone.

Note: When the time zone setting of the mobile phone is inconsistent with the device, can modify the time zone manually to synchrony.

Modified time zone will apply to the time display in monitoring and recording mode.

10. Device Delete

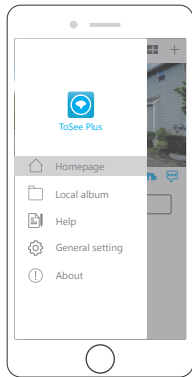
On setting interface select "Delete the device", click "Delete" to confirm.

After deleting device, the device automatically resets and enters the "Network configuration" mode.

TOSEE PLUS

1. Local Album

On menu page, click Local album  to view photo, screenshot and video stored in local file.



2. Help

On menu page, click  into Help setting.


View "First use of the device" and "FAQ list" when you encounter problems in using.

3. General settings

On menu page, click  into the General settings.

In this page, you can change the password or logout your account.

4. About

On menu page, click  into the About page. About interface displays APP Current version / disclaimer, you can rate the APP and edit EULA.

WARM TIPS

1. Before first use, please remove the insulation from the battery.
2. Make sure that your camera is connected to a 2.4GHz network, don't use 5GHz Wi-Fi, and Wi-Fi is not hidden, otherwise Wi-Fi cannot be detected.
3. Keep the doorbell in range of the wifi router. Thick or insulated doors can greatly reduce strength of your wifi signal.
4. When the App prompts you to try the free trial, please don't click "give up the free trial", otherwise you will lose chance for free use of the Cloud package.
5. Please update the firmware in time, the updated device will display a battery level indicator.

TROUBLESHOOTINGS

Q: The video doorbell can't connect Wi-Fi.

- A:**
1. Please make sure your mobile phone is connected 2.4GHz WIFI, not 5GHz WIFI;
 2. Please make sure that the blue indicator is slowly flash;
 3. Check the password whether it is correct or have space
 4. Please make sure you have remove the insulation from the battery.
 5. Then RESET the camera and try again.

Q: The video doorbell can't receive any notifications.

- A:**
1. Please check it again whether your phone notification permission enabled.
 2. Turn off "Power saving mode" of your phone.

Q: What other power supply mode the device support?

A: This item support: 18650 Battery / AC (14/24V) external power / Charge with USB cable.

Q: Can't find a way to check the battery level in the app

A: Please update the firmware in the settings, the device will display a battery level indicator.

CONTACT US

For any inquiries, issues or comments concerning our products, please send E-mail to the address below or call us. We will respond as soon as possible.

E-mail: cs@akasotech.com