
USER MANUAL

AKASO HEATED VEST

AKASO

PACKAGE CONTENTS

	
Heated Vest * 1	10000 mAh Battery * 1
	
USB Cable * 1	Laundry Bag * 1
	
Package * 1	Quick Operation Guide * 1

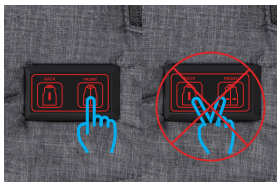
WARNING

Read all safety warnings and instructions. Failure to follow the warnings and instructions may result in electric shock, fire and/or serious injury. save all warnings and instructions for future reference.

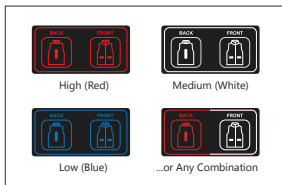
OPERATION



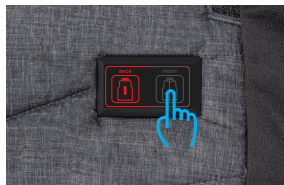
Plug-In: Connect the USB plug (located in left pocket) to the battery.



Turn On: Press & hold the FRONT or BACK button for 3 seconds until the red light is on. It is suggested to press the two buttons separately and gently, NOT simultaneously.



Adjust: Single press the button to switch heating levels between High (~116°F), Medium (~110°F) and Low (~104°F).



Turn Off: Press & hold the button for 3 seconds until the light is off or disconnect the USB with the battery.

HEATING TIME DATA

Heating Level	Temp(°F/°C)	Heating Time for		
		FRONT button on	BACK button on	FRONT & BACK buttons on
High (Red)	117°F / 47°C	10.2H	7.2H	4H
Medium (White)	108°F / 42°C	13.8H	9H	6.7H
Low (Blue)	102°F / 39°C	17.1H	11.2H	9H

Note: The data above is testing with a fully charged 10000mAh power bank, due to different operation condition, please allow some differences exist.

HEATING AREAS

Heating Zones on left pocket, right pocket, mid-back and collar.



CLEANING INSTRUCTIONS

- ① Remove the power bank from the vest pocket before washing, and put the USB plug back to the pocket and zip up.
- ② Gentle hand wash or machine wash in gentle cycle with a mild detergent and cold water. Be sure to use a laundry bag while in machine wash.
- ③ Hang dry recommended.
- ④ Do not wring or twist. Do not Iron, Bleach or Dry Clean.
- ⑤ Never immerse your battery in liquid or allow liquid to flow inside.



Hand Wash



Machine Washable



Do Not Iron



Do Not Dry Clean



Do Not Bleach



Do Not Wring

SAFETY INSTRUCTIONS

- Do not use this heated vest with an infant, child, a helpless person, or anyone insensitive to heat, such as a person with poor blood circulation.
- If you have a medical condition making you sensitive to overheating, or you use any personal medical devices, consult your physician to determine if use of this product is appropriate.
- Never use if inner liner is wet.
- Not recommended to wear over bare skin.
- Turn off power immediately if discomfort occurs.
- If improper operation of this heated vest is observed, discontinue its use immediately and contact AKASO service for assistance.

BATTERY INSTRUCTIONS

Specifications			
Capacity	10000mAh / 37 Wh		
Input	DC 5V / 3A	DC 9V / 1.5A	DC 12V / 1A
Output	DC 5V / 3A	DC 9V / 1.5A	DC 12V / 1A
Type C (PD 3.0 In/Out)	DC 5V / 3A	DC 9V / 1.5A	DC 12V / 1A

BATTERY OPERATION

When USB is plugged in, the battery will power on automatically. Double-click the power button, the battery will turn off. To turn it back on, simply single press the power button or unplug & re-plug in the USB.

BATTERY CHARGING

①  100%

②  75%

③  50%

④  25%

- ① Single press the button to check the remaining power level or charging level from 4 LED indicators.
- ② Plug the included USB cable into the input port on the power bank.
- ③ Attach the other end, usually a standard USB, into a wall charger or other USB power source.
- ④ Fully charged after 6 hours when the 4 LED indicators on, then ready for use.

BATTERY STORAGE

- Store a fully charged battery in a cool dry place.
- Re-charge the battery after long periods of storing time.
- Do not expose the battery to rain or snow.
- Do not freeze or immerse the battery in water or any other liquid.
- Do not dry the battery with an external heat source such as a microwave oven or hair dryer.
- Do not drop, disassemble, open, crush, bend, deform, puncture, shred, microwave, incinerate or paint the battery.
- Do not store your battery with metal objects, such as coins, keys or necklaces. If the battery terminals come in contact with metal objects, this may cause a fire.

FREQUENTLY ASKED QUESTIONS

Q: How long does it take to fully charge my battery?

A: Normally, it takes about 6 hours to get fully charged.

Q: How long will the battery last while in use?

A: While Front or Back button on, the battery will last approximately 7.2 hours on high, 9 hours on medium, 11.2 hours on low;

Both dual buttons on, it will last approximately 4 hours on high, 6.7 hours on medium, 9 hours on low.

Q: How can I tell if the battery is fully charged?

A: Check the LED indicator lights on the battery . All 4 LED lights stay on when the battery is fully charged.

Q: What if the heated vest does not turn on or operate properly with a fully charged battery?

A: Clean the ports on the battery. Reconnect the battery and restart the heated power button.

If the heated vest still does not work properly, please contact our customer service.

Q: How do i clean the vest?

A: Always remove the battery before washing and put the USB plug back to the pocket and zip up. Gentle hand wash, or machine wash in gentle cycle with a laundry bag.

Q: How do I take care of my batteries?

A: Fully charge the battery prior to its first use. Re-charge the battery after long periods of storing time. Store a fully charged battery in a cool dry place.

Q: Is there a warranty available? How long does it cover?

A: 1-Year warranty covering any defects or malfunctions of AKASO apparel heating components.

1-Year warranty covering any defects or malfunctions of AKASO Lithium-Ion battery.

CONTACT US

For any problem with AKASO products, please feel free to contact us, we will respond within 24 hours.

E-mail: cs@akasotech.com

Tel: (888) 466-9222 (US) Mon-Fri (except holiday) 9am-5pm (EST)

Official website: www.akasotech.com